




DIAO.

Efficiency, created from
diamonds and pearls.

More concentration of power, longer service life, better control.

DIAO

The word "DIAO" is rendered in large, orange-outlined, sans-serif capital letters. The letters are superimposed on a background of various faceted, 3D-style diamond shapes in shades of blue and teal. The 'D' is a simple outline, while the 'I', 'A', and 'O' are solid orange shapes.



Brasseler®, Komet®, Art2®, CeraBur®, CeraCut®, CeraDrill®, CeraPost®, DC1®, DIAO®, FastFile®, F360®, F6 SkyTaper®, H4MC®, OccluShaper®, OptiPost®, PolyBur®, PrepMarker®, Procodile®, Procodile Q®, R6 ReziFlow® and SHAX® are registered trademarks of Gebr. Brasseler GmbH & Co. KG.

ReFlex® and EndoPilot® are registered trademarks of the company Schlumbohm GmbH & Co. KG

Some of the products and designations mentioned in the text are trademarked, patented or copyrighted. The absence of a special reference or the sign ® should not be interpreted as the absence of legal protection.

This publication is copyrighted. All rights, also with regard to translation, reprint and reproduction (also in the form of extracts) are reserved. No part of this publication may be reproduced or reprocessed using electronic systems in any form or by any means (photocopying, microfilm or other methods) without the written permission of the editor.

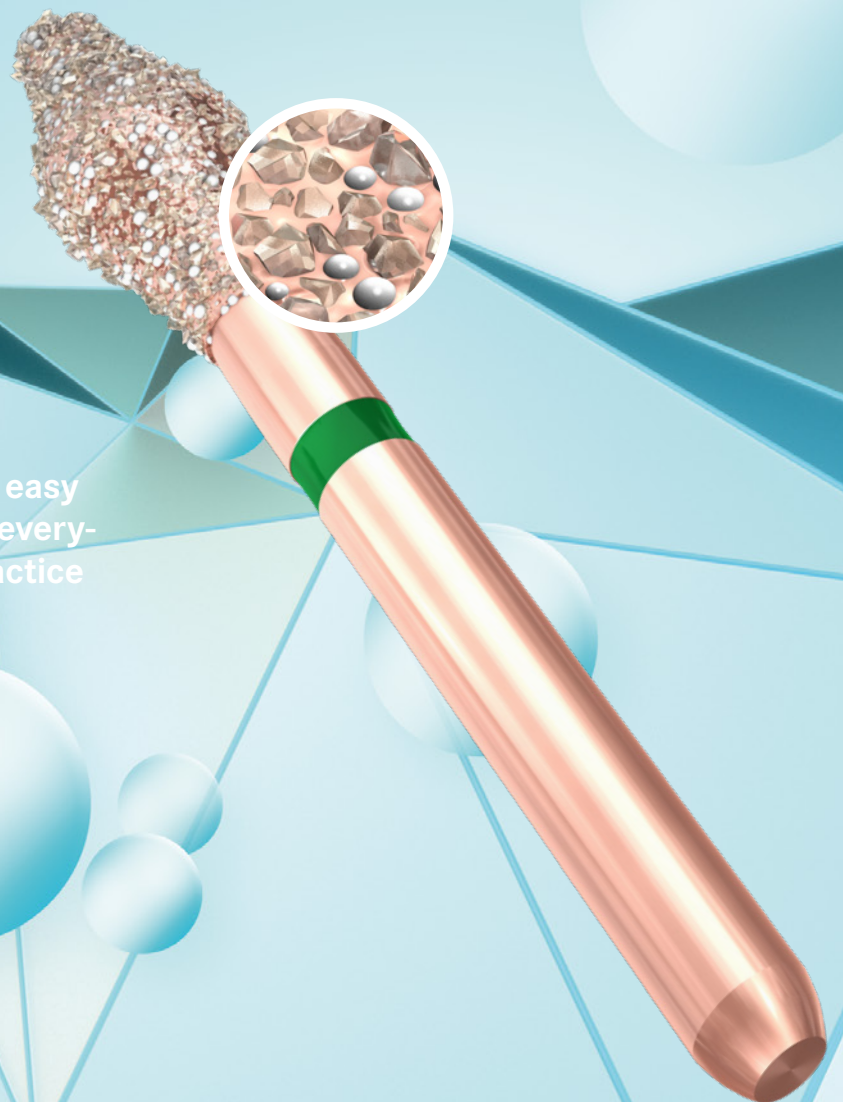
Colours and products are subject to alterations. Printing errors excepted.

A new generation of diamonds for preparations of unmatched quality.

● Concentrated power
for exceptional durability

● Optimum control

● Rose gold color for easy
recognition during every-
day work at the practice





A powerful innovation with amazing durability.

Crown preparation counts among the core jobs at the dental practice. A routine that demands a lot: Concentration, time and physical effort. Isn't there a way of making these jobs easier and better at the same time?

The answer: DIAO, with its innovative diamond coating that combines diamond grains and ceramic pearls. This combination creates concentrated power that can be applied with the utmost precision, giving the instrument amazing durability and significantly prolonging the sharpness of its coating. You can rely on the instrument staying sharp over an extremely long time. That's not all: DIAO is easy and comfortable to guide for perfect control.

For optimum recognition facilitating the workflow in everyday use, DIAO is provided with an unmistakable color: a classy, modern, radiant rose gold.

- **Concentrated power for exceptional durability**

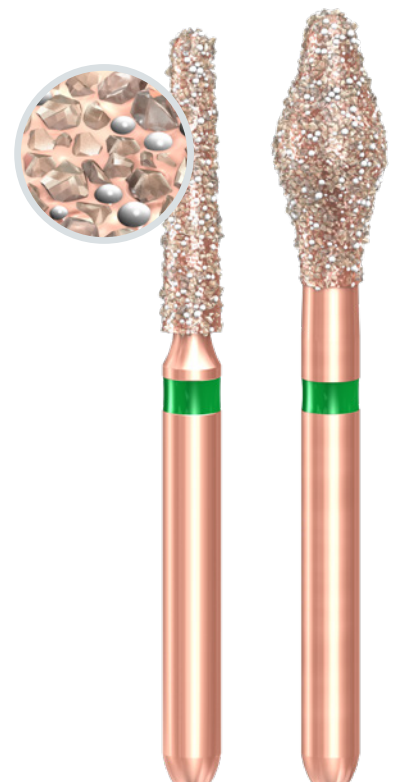
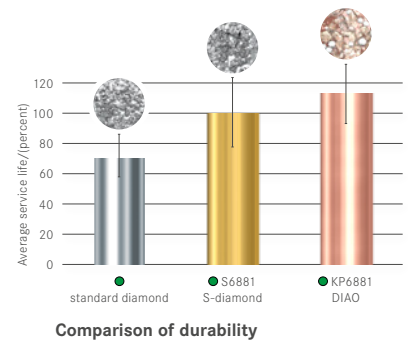
The combination of diamond grains and ceramic pearls leads to an unprecedented concentration of power that ensures an incredibly long service life. The optimal density of the coating guarantees that the instrument stays sharp for an exceptionally long time – a sharpness you can rely on time and time again.

- **Optimum control**

Thanks to its innovative diamond coating—very little pressure is required to achieve optimal results. Therefore, DIAO can be guided smoothly and with ease, thus increasing the safety during the treatment.

- **Easy recognition during everyday work thanks to the rose gold color**

DIAO supports the entire team every day at the practice. With its distinctive rose gold color, DIAO greatly facilitates the instrument management. The instruments stand out wherever they are, during the treatment, during reprocessing process or when placing the instruments back into storage. This contributes to a smooth workflow at the practice.

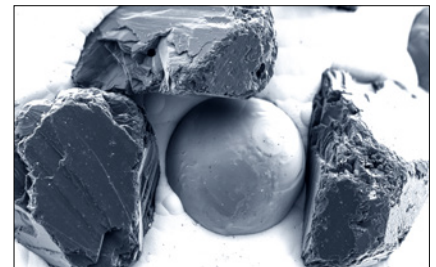
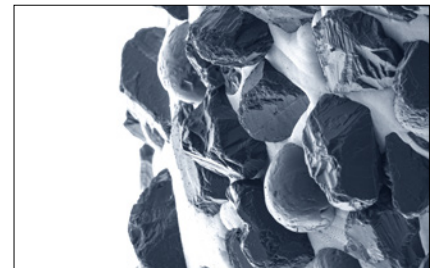
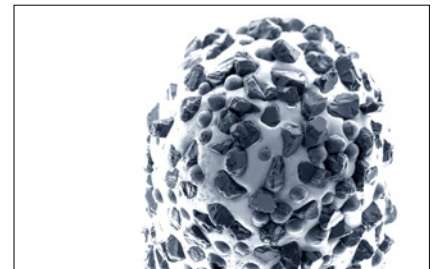
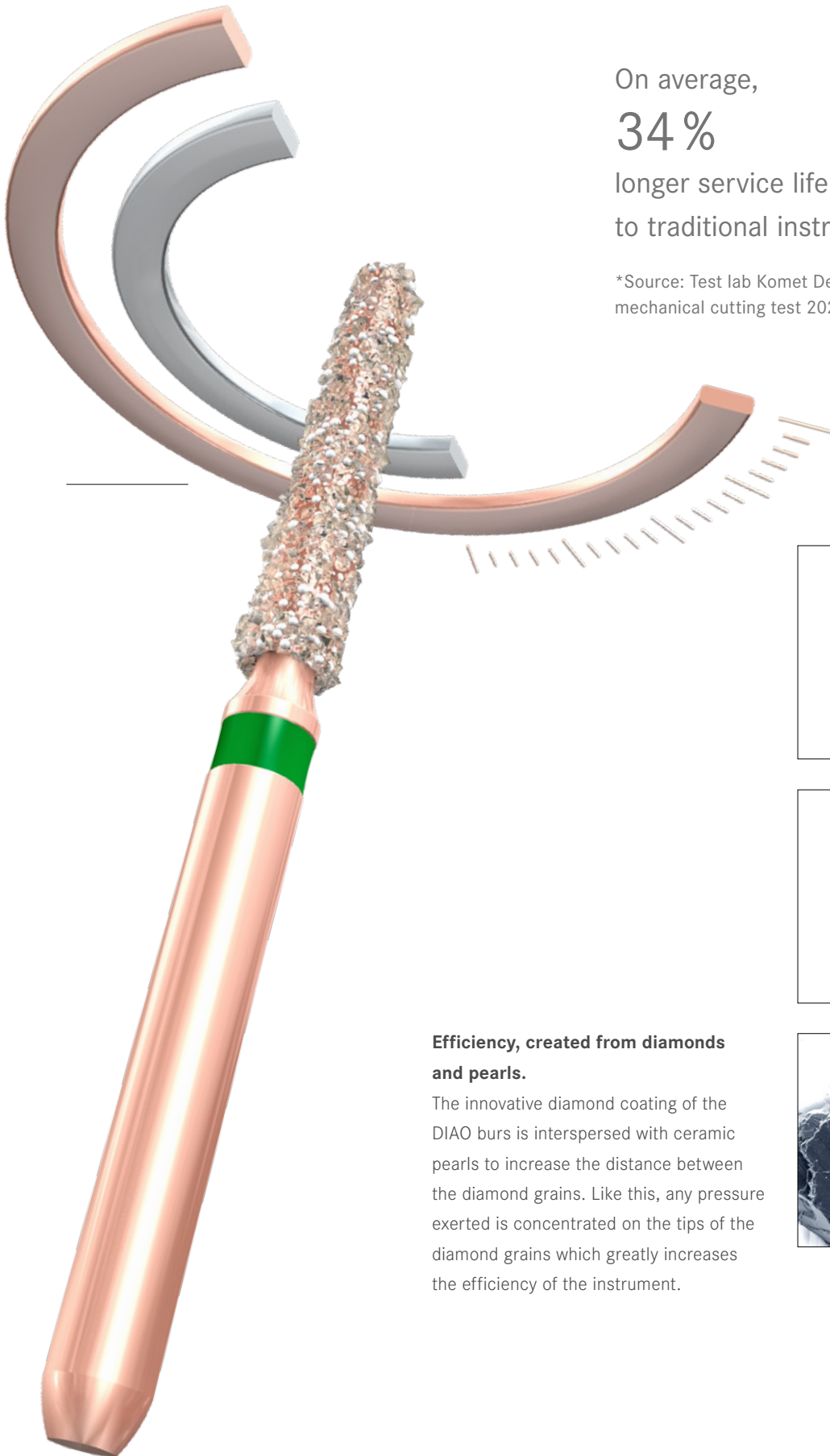


On average,

34%

longer service life compared
to traditional instruments*

*Source: Test lab Komet Dental,
mechanical cutting test 2020



**Efficiency, created from diamonds
and pearls.**

The innovative diamond coating of the DIAO burs is interspersed with ceramic pearls to increase the distance between the diamond grains. Like this, any pressure exerted is concentrated on the tips of the diamond grains which greatly increases the efficiency of the instrument.

DIAO. In action.

More concentration of power, longer service life, better control.

DIAO is much easier to handle and impresses the user with its smooth operation and the way it glides across the tooth. Although easy to control, the instrument removes material consistently and at a greater speed.



Directions:

- Optimum speed:
☉_{opt.} 160,000 rpm
(except KP6370: ☉_{opt.} 100,000 rpm)
Preferably use in a red contra-angle.
The maximum speed is indicated on the product label.
- At ☉_{opt.} 300,000 rpm, the instrument can also be used in a dental turbine. (except KP6370).
- Always provide sufficient spray cooling at least 50 ml/min.
- To achieve a good preparation result, the surface should be smoothed with a finisher of identical matching shape after the pre-preparation.
- The instruments remove material very effectively. Therefore, only low contact pressure (<2N) has to be applied during work.

DIAO.

The range.

Instruments with 8 mm working length

Cylinder, round edge



● KP6837KR.314.012



● KP6837KR.314.014



● KP6837KR.314.016

Cylinder round



● KP6881.314.012



● KP6881.314.014



● KP6881.314.016

Torpedo



● KP6878.314.012



● KP6878.314.014



● KP6878.314.016

Flame



● KP6862.314.012



● KP6862.314.014



● KP6862.314.016

Tapered, round edge



● KP6847KR.314.014



● KP6847KR.314.016



● KP6847KR.314.018

Tapered, round



● KP6856.314.012



● KP6856.314.014



● KP6856.314.016



● KP6856.314.018



● KP6856.314.021

Torpedo, tapered



● KP6878K.314.012



● KP6878K.314.014



● KP6878K.314.016



● KP6878K.314.018



● KP6878K.314.021

Instruments with 10 mm working length

Cylinder, round



● KP6882.314.012



● KP6882.314.014



● KP6882.314.016

Torpedo



● KP6879.314.012



● KP6879.314.014



● KP6879.314.016

Tapered, round



● KP6850.314.014

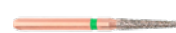


● KP6850.314.016



● KP6850.314.018

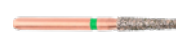
Tapered, round edge



● KP6848KR.314.014



● KP6848KR.314.016



● KP6848KR.314.018

Torped, tapered



● KP6879K.314.014



● KP6879K.314.016



● KP6879K.314.018



● KP6879K.314.021

Flame



● KP6863.314.012



● KP6863.314.014



● KP6863.314.016

Instruments with 12 mm working length

Cylinder, round



● KP6882L.314.014

Torpedo



● KP6879L.314.014

Tapered, round



● KP6856XL.314.021

Occlusal/lingual reduction

OccluShaper



● KP6370.314.030



● KP6370.314.035

Egg



● KP6379.314.018



● KP6379.314.023



● KP6379E.314.029

Bud



● KP6368.314.016



● KP6368.314.023

Komet Dental

Gebr. Brasseler GmbH & Co. KG

Trophagener Weg 25 · 32657 Lemgo

Postfach 160 · 32631 Lemgo · Germany

Verkauf Deutschland:

Telefon +49 (0) 5261 701-700

Telefax +49 (0) 5261 701-289

info@kometdental.de

www.kometdental.de

Export:

Telefon +49 (0) 5261 701-0

Telefax +49 (0) 5261 701-329

export@kometdental.de

www.kometdental.com

Komet Austria Handelsagentur GmbH

Hellbrunner Straße 15

5020 Salzburg · Austria

Telefon +43 (0) 662 829-434

Telefax +43 (0) 662 829-435

info@kometdental.at

www.kometdental.at