

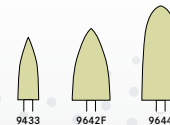
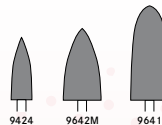
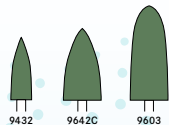
Compass | Laboratory polishers

Recommendations for the appropriate use of laboratory polishers



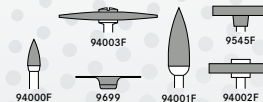
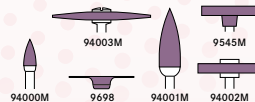
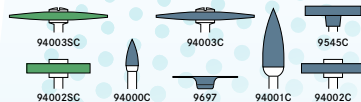
Partial/full dentures

Denture acrylics



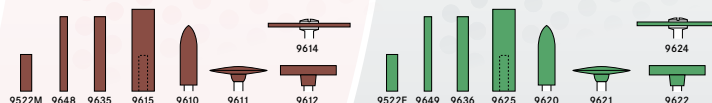
Facets, veneers, inlays, crowns

Dental ceramics



Inlays, crowns, bridges

Precious metals



Crowns, bridges, denture bases

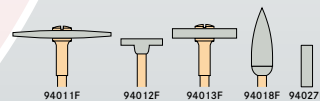
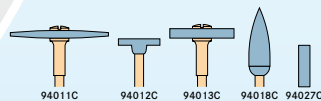
Non-precious metal alloys



(Primary) crowns,
abutments, edges

High-grade ceramics

e.g. ZrO₂, pressed ceramics



Pre-polishing | shaping

Polishing

High-shine polishing

Optimum speed: \varnothing_{max} 6.000 rpm Failure to observe the maximum permissible speed leads to an increased safety risk!

Colours and products subject to alterations.

Universal polishers

Precious metal alloys/veneer acrylics



9557



9558



9630



9559



9627



9554

Universal polishers for low-lustre polishing

Metal alloys



9584



9661



9678



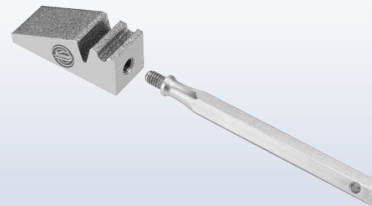
9574



9575



9572



Dressing diamond

593.000

Mandrels



326
020



326
030



310



329



329L



329A



303
050



305
050



305
080